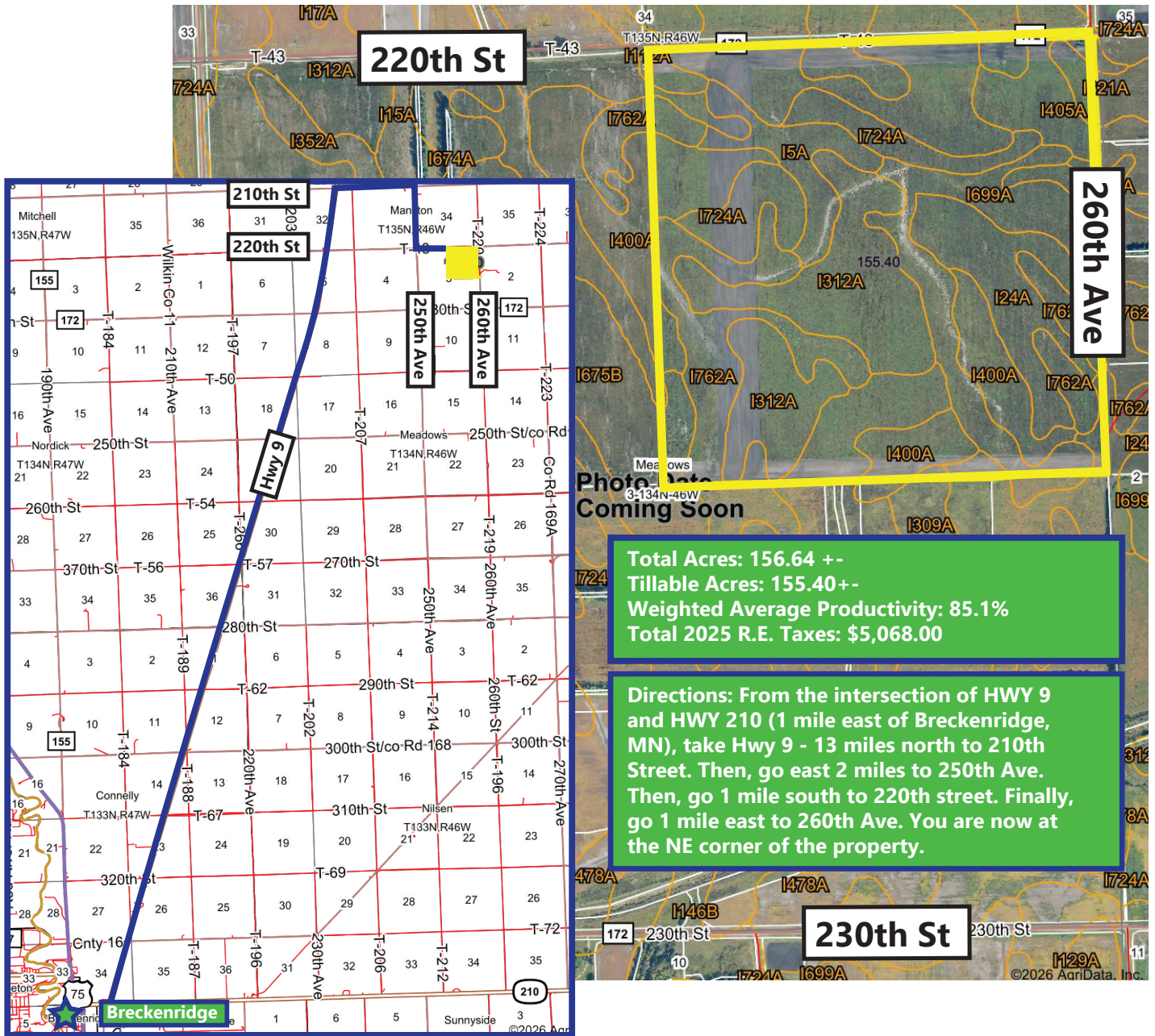


# For Sale Wilkin County, MN Farmland

## NE ¼ Section 3-134-46

### Approximately 156.64 Acres +-



**Total Acres: 156.64 +-**  
**Tillable Acres: 155.40+-**  
**Weighted Average Productivity: 85.1%**  
**Total 2025 R.E. Taxes: \$5,068.00**

**Directions: From the intersection of HWY 9 and HWY 210 (1 mile east of Breckenridge, MN), take Hwy 9 - 13 miles north to 210th Street. Then, go east 2 miles to 250th Ave. Then, go 1 mile south to 220th street. Finally, go 1 mile east to 260th Ave. You are now at the NE corner of the property.**



\*All information contained herein is believed to be true but should be verified to the buyer's satisfaction in case of error, typographical or otherwise. ALL information is subject to change without further notice.

**Steve D. Johnson**  
 Real Estate Broker  
 Auctioneer License #976  
 701-799-5213  
 steve@johnsonauctionandrealty.com

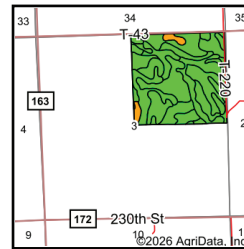
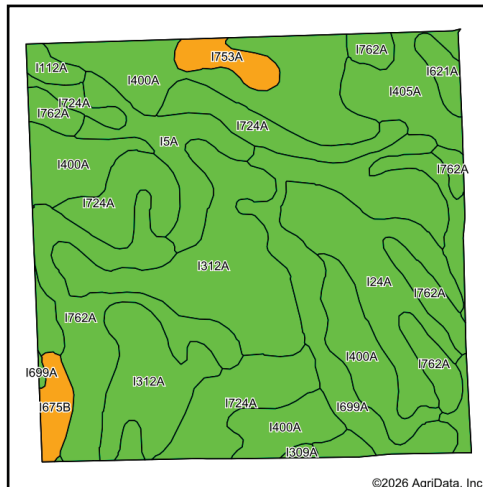


3137 32nd Ave S, Ste 211 | Fargo, ND 58103  
 www.johnsonauctionandrealty.com

# For Sale Wilkin County, MN Farmland

## NE ¼ Section 3-134-46

### Approximately 156.64 Acres +-



State: **Minnesota**  
 County: **Wilkin**  
 Location: **3-134N-46W**  
 Township: **Meadows**  
 Acres: **155.4**  
 Date: **3/20/2026**



Soils data provided by USDA and NRCS.

©2026 AgriData, Inc.

Area Symbol: MN167, Soil Area Version: 22

Code	Soil Description	Acres	Percent of field	PI Legend	NonIrr Class *c	Productivity Index	*n NCCPI Overall
I400A	Gilby loam, 0 to 2 percent slopes	33.50	21.7%		Ile	89	62
I312A	Wyndmere fine sandy loam, 0 to 2 percent slopes	26.44	17.0%		IIle	77	44
I762A	Vallers loam, lake plain, 0 to 1 percent slopes	22.89	14.7%		IIw	90	65
I724A	Eimville fine sandy loam, 0 to 2 percent slopes	21.52	13.8%		IIle	86	52
I699A	Rockwell loam, 0 to 1 percent slopes	15.67	10.1%		IIw	87	48
I24A	Grimstad fine sandy loam, 0 to 2 percent slopes, aspen parkland	13.03	8.4%		IIs	88	49
I5A	Borup loam, 0 to 1 percent slopes	7.28	4.7%		IIw	90	45
I405A	Antler clay loam, 0 to 2 percent slopes	6.72	4.3%		Ile	89	58
I753A	Rosewood loamy fine sand, 0 to 1 percent slopes	2.69	1.7%		IVw	54	28
I675B	Lohnes loamy sand, 2 to 6 percent slopes	2.35	1.5%		VIe	37	32
I621A	Clearwater sandy clay loam, 0 to 1 percent slopes	1.68	1.1%		IIw	94	50
I112A	Augsburg very fine sandy loam, 0 to 1 percent slopes	1.31	0.8%		IIw	90	48
I309A	Arveson loam, 0 to 1 percent slopes	0.32	0.2%		IIw	74	44
<b>Weighted Average</b>						<b>2.40</b>	<b>*n 85.1</b>

\*n: The aggregation method is "Weighted Average using all components"  
 \*c: Using Capabilities Class Dominant Condition Aggregation Method

Soils data provided by USDA and NRCS.



\*All information contained herein is believed to be true but should be verified to the buyer's satisfaction in case of error, typographical or otherwise. ALL information is subject to change without further notice.

**Steve D. Johnson**  
 Real Estate Broker  
 Auctioneer License #976  
 701-799-5213  
 steve@johnsonauctionandrealty.com



3137 32nd Ave S, Ste 211 | Fargo, ND 58103  
 www.johnsonauctionandrealty.com