

Dickey County, ND Farm Land For Sale

Lot 1 & Farmstead Section 12-129-63

Approximately 20.00 Acres +-



*All information contained herein is believed to be true but should be verified to the buyer's satisfaction in case of error, typographical or otherwise. ALL information is subject to change without further notice.

Steve D. Johnson
 Real Estate Broker
 Auctioneer License #976
 701-799-5213
 steve@johnsonauctionandrealty.com

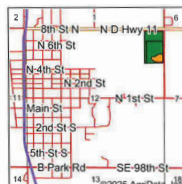
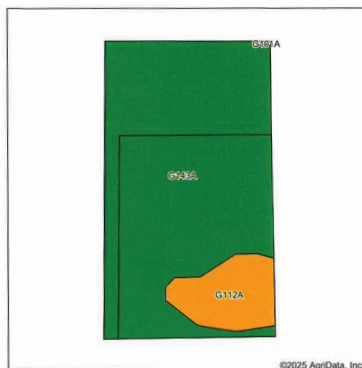
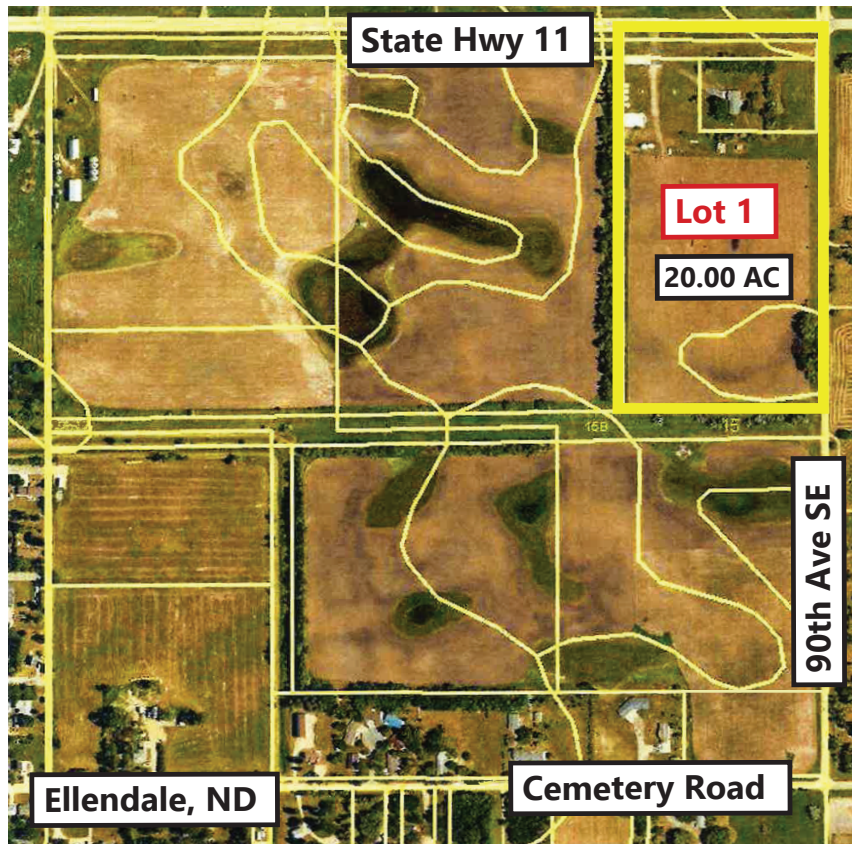


3137 32nd Ave S, Ste 211 | Fargo, ND 58103
 www.johnsonauctionandrealty.com

Dickey County, ND Farm Land For Sale

Lot 1 & Farmstead Section 12-129-63

Approximately 20.00 Acres +-



State: North Dakota
 County: Dickey
 Location: 12-129N-63W
 Township: Ellendale
 Acres: 19.63
 Date: 10/14/2025



Soils data provided by USDA and NRCS.

Area Symbol: ND021, Soil Area Version: 27							
Code	Soil Description	Acres	Percent of field	PI Legend	Non-Irr Class 'c	Productivity Index	% NCCPI Overall
G143A	Barnes-Svea loams, 0 to 3 percent slopes	17.14	87.3%		IIc	85	60
G112A	Hamerly-Tonka-Parnell complex, 0 to 3 percent slopes	2.49	12.7%		IIw	58	47
Weighted Average						2.00	81.6
							*n 58.4

*n: The aggregation method is "Weighted Average using all components"
 *c: Using Capabilities Class Dominant Condition Aggregation Method



*All information contained herein is believed to be true but should be verified to the buyer's satisfaction in case of error, typographical or otherwise. ALI information is subject to change without further notice.

Steve D. Johnson
 Real Estate Broker
 Auctioneer License #976
 701-799-5213
 steve@johnsonauctionandrealty.com



3137 32nd Ave S, Ste 211 | Fargo, ND 58103
 www.johnsonauctionandrealty.com