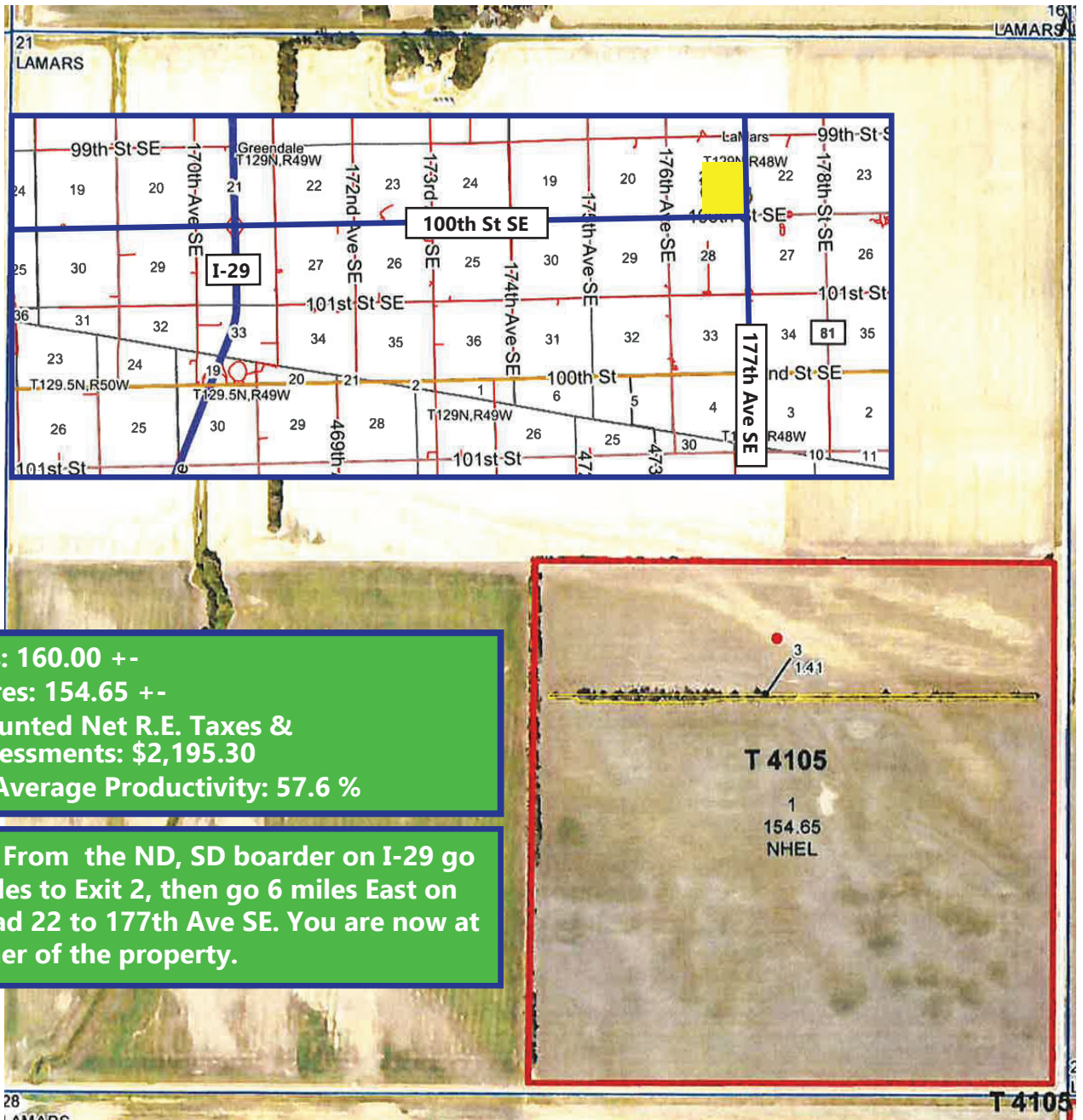


# Richland County, ND Land For Sale

## SE 1/4 Section 21-129-48

### Approximately 154.65 Acres +-



**Total Acres: 160.00 +-  
 Tillable Acres: 154.65 +-  
 2023 Discounted Net R.E. Taxes &  
 Special Assessments: \$2,195.30  
 Weighted Average Productivity: 57.6 %**

**Directions: From the ND, SD boarder on I-29 go  
 North 2 miles to Exit 2, then go 6 miles East on  
 County Road 22 to 177th Ave SE. You are now at  
 the SE corner of the property.**



\*All information contained herein is believed to be true but should be verified to the buyer's satisfaction in case of error, typographical or otherwise. ALL information is subject to change without further notice.

**Steve D. Johnson**  
 Real Estate Broker  
 Auctioneer License #976  
 701-799-5213  
 steve@johnsonauctionandrealty.com

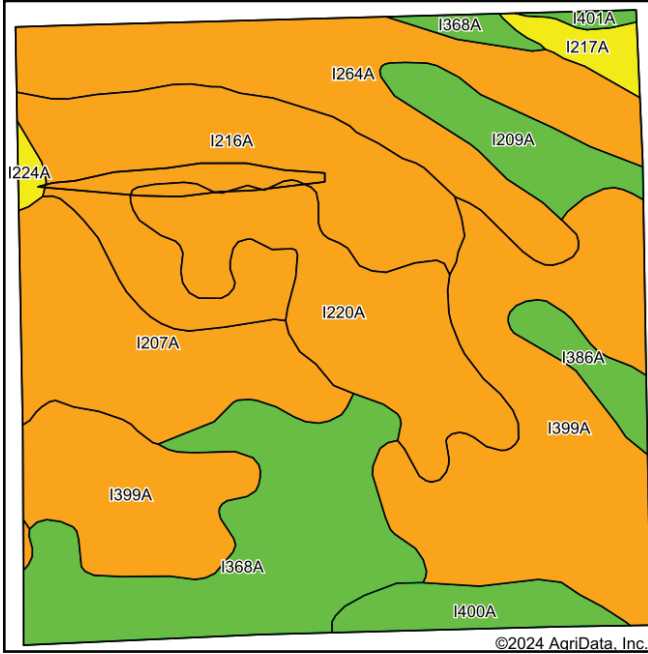


3137 32nd Ave S, Ste 211 | Fargo, ND 58103  
 www.johnsonauctionandrealty.com

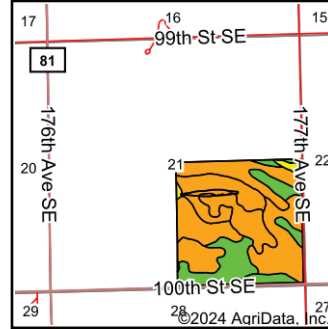
# Richland County, ND Land For Sale

## SE 1/4 Section 21-129-48

### Approximately 154.65 Acres +/-



Soils data provided by USDA and NRCS.



State: **North Dakota**  
 County: **Richland**  
 Location: **21-129N-48W**  
 Township: **LaMars**  
 Acres: **158.14**  
 Date: **6/28/2024**



Area Symbol: ND077, Soil Area Version: 33

Code	Soil Description	Acres	Percent of field	PI Legend	NonIrr Class *c	Productivity Index	*n NCCPI Overall	
I399A	Gilby loam, moderately saline, 0 to 2 percent slopes	39.70	25.1%		III s	50	36	
I216A	Wyndmere fine sandy loam, slightly saline, stratified substratum, 0 to 2 percent slopes	23.44	14.8%		III e	52	41	
I264A	FordvilleDivide loams, 0 to 2 percent slopes	22.45	14.2%		II s	55	44	
I368A	Glyndon loam, slightly saline, stratified substratum, 0 to 2 percent slopes	22.38	14.2%		II e	71	49	
I220A	Arveson loam, slightly saline, stratified substratum, 0 to 1 percent slopes	17.13	10.8%		III w	48	52	
I207A	Wyndmere loam, slightly saline, stratified substratum, 0 to 2 percent slopes	16.11	10.2%		II e	59	42	
I209A	Swenoda fine sandy loam, 0 to 2 percent slopes	5.97	3.8%		III e	74	57	
I400A	Gilby loam, 0 to 2 percent slopes	4.65	2.9%		II e	78	61	
I386A	Perella silty clay loam, stratified substratum, 0 to 1 percent slopes	2.96	1.9%		II w	88	67	
I217A	MantadorDelamereWyndmere loams, slightly saline, stratified substratum, 0 to 2 percent slopes	2.13	1.3%		II e	69	50	
I224A	Tiffany fine sandy loam, stratified substratum, 0 to 1 percent slopes	0.66	0.4%		III w	69	27	
I401A	LankinGardenaTonka complex, 0 to 2 percent slopes	0.56	0.4%		II e	90	65	
<b>Weighted Average</b>						<b>2.55</b>	<b>57.6</b>	<b>*n 44.4</b>

\*n: The aggregation method is "Weighted Average using all components"  
 \*c: Using Capabilities Class Dominant Condition Aggregation Method

Soils data provided by USDA and NRCS.



\*All information contained herein is believed to be true but should be verified to the buyer's satisfaction in case of error, typographical or otherwise. ALL information is subject to change without further notice.

**Steve D. Johnson**  
 Real Estate Broker  
 Auctioneer License #976  
 701-799-5213  
 steve@johnsonauctionandrealty.com



3137 32nd Ave S, Ste 211 | Fargo, ND 58103  
 www.johnsonauctionandrealty.com