



\*All information contained herein is believed to be true but should be verified to the buyer's satisfaction in case of error, typographical or otherwise. All information is subject to change without further notice.

**Steve D. Johnson**  
Real Estate Broker  
Auctioneer License #976  
701-799-5213  
steve@johnsonauctionandrealty.com



3137 32nd Ave S, Ste 211 | Fargo, ND 58103  
www.johnsonauctionandrealty.com



# Clay County, ND

## FARM LAND FOR SALE

### 90.2 +/- Acres



**Steve Johnson**  
701-799-5213

# Clay County MN Farm Land For Sale

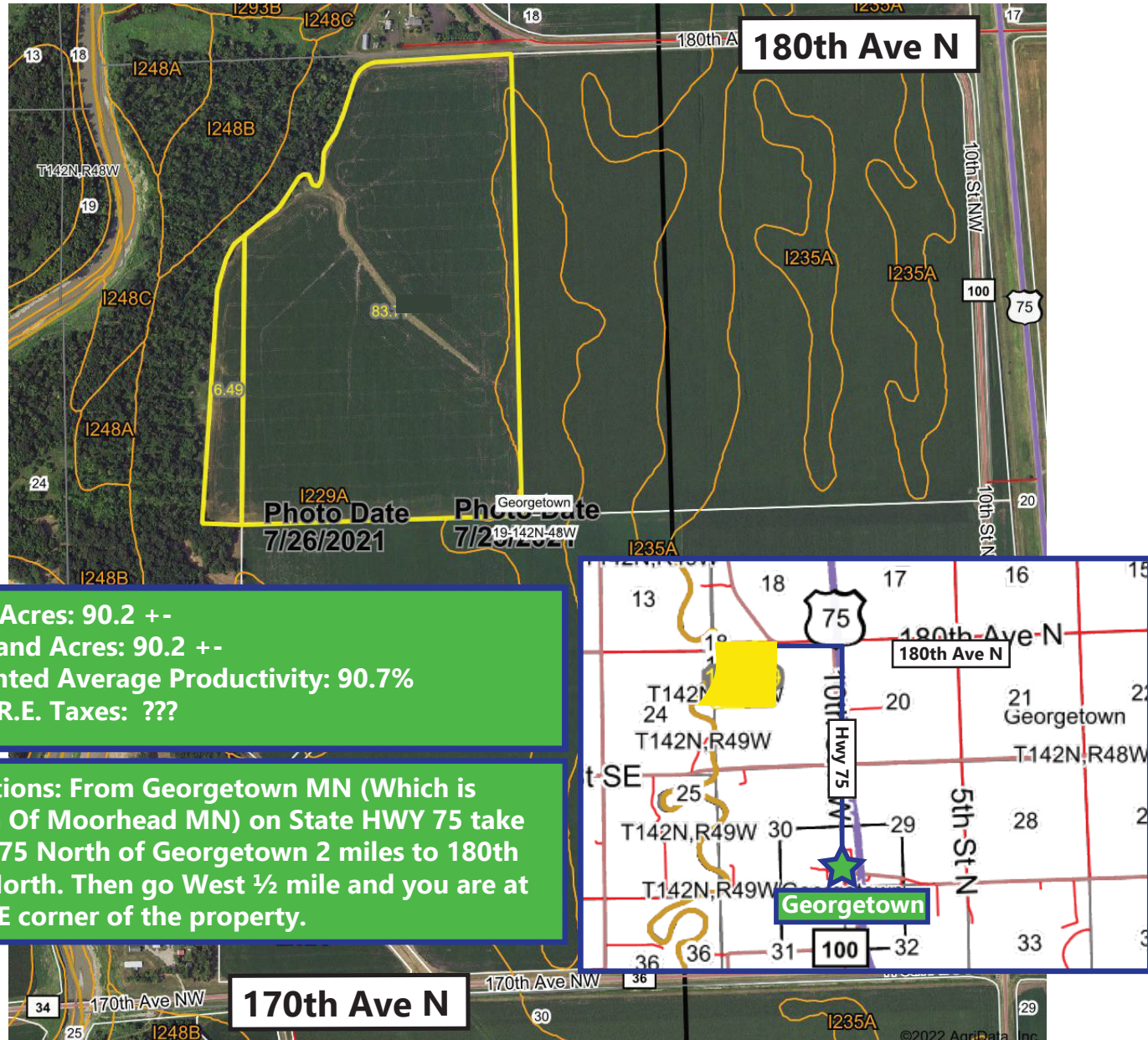
## Part of NW ¼ Section 19-142-48 Less Ditch

### Approximately 90.2 Acres +-

# Clay County MN Farm Land For Sale

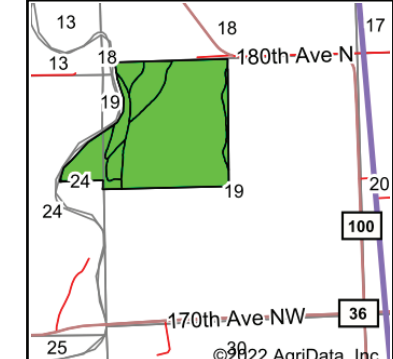
## Part of NW ¼ Section 19-142-48 Less Ditch

### Approximately 90.2 Acres +-

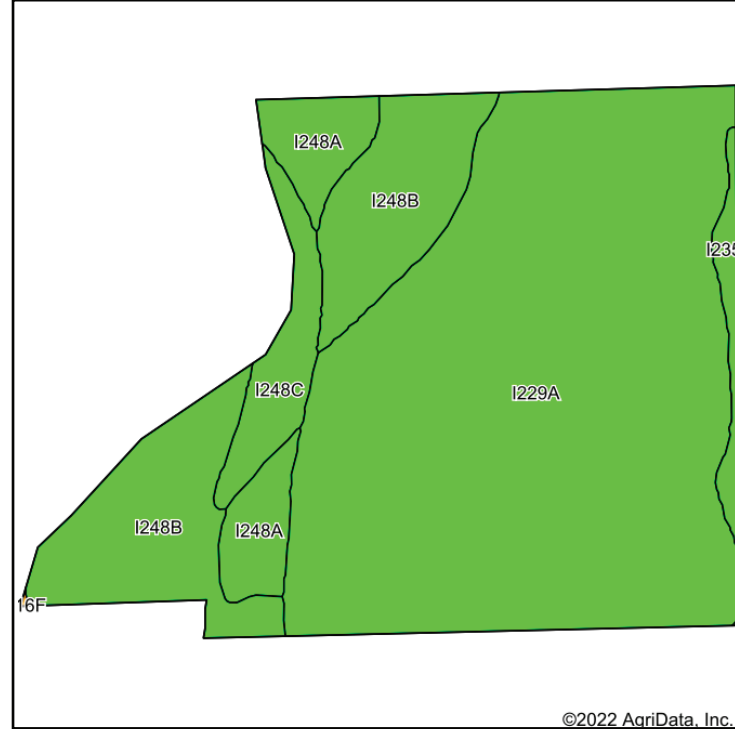


**Total Acres: 90.2 +-**  
**Cropland Acres: 90.2 +-**  
**Weighted Average Productivity: 90.7%**  
**2022 R.E. Taxes: ???**

**Directions: From Georgetown MN (Which is North Of Moorhead MN) on State HWY 75 take HWY 75 North of Georgetown 2 miles to 180th Ave North. Then go West ½ mile and you are at the NE corner of the property.**



State: **Minnesota**  
 County: **Clay**  
 Location: **19-142N-48W**  
 Township: **Georgetown**  
 Acres: **154.59**  
 Date: **10/20/2022**



Soils data provided by USDA and NRCS.

Area Symbol: MN027, Soil Area Version: 18

Code	Soil Description	Acres	Percent of field	PI Legend	NonIrr Class *c	Productivity Index	*n NCCPI Overall	
I229A	Fargo silty clay, 0 to 1 percent slopes	105.44	68.2%		Illw	94	51	
I248B	Wahpeton silty clay, 2 to 6 percent slopes, occasionally flooded	29.49	19.1%		Ile	84	52	
I248A	Wahpeton silty clay, 0 to 2 percent slopes, occasionally flooded	9.56	6.2%		Ile	84	53	
I248C	Wahpeton silty clay, 6 to 9 percent slopes, occasionally flooded	7.15	4.6%		Ile	81	51	
I235A	Fargo silty clay, depressional, 0 to 1 percent slopes	2.95	1.9%		Illw	83	33	
<b>Weighted Average</b>						<b>2.02</b>	<b>90.7</b>	<b>*n 51</b>

\*n: The aggregation method is "Weighted Average using all components"  
 \*c: Using Capabilities Class Dominant Condition Aggregation Method  
 Soils data provided by USDA and NRCS.



\*All information contained herein is believed to be true but should be verified to the buyer's satisfaction in case of error, typographical or otherwise. ALL information is subject to change without further notice.  
**Steve D. Johnson**  
 Real Estate Broker  
 Auctioneer License #976  
 701-799-5213  
 steve@johnsonauctionandrealty.com



3137 32nd Ave S, Ste 211 | Fargo, ND 58103  
 www.johnsonauctionandrealty.com



\*All information contained herein is believed to be true but should be verified to the buyer's satisfaction in case of error, typographical or otherwise. ALL information is subject to change without further notice.  
**Steve D. Johnson**  
 Real Estate Broker  
 Auctioneer License #976  
 701-799-5213  
 steve@johnsonauctionandrealty.com



3137 32nd Ave S, Ste 211 | Fargo, ND 58103  
 www.johnsonauctionandrealty.com